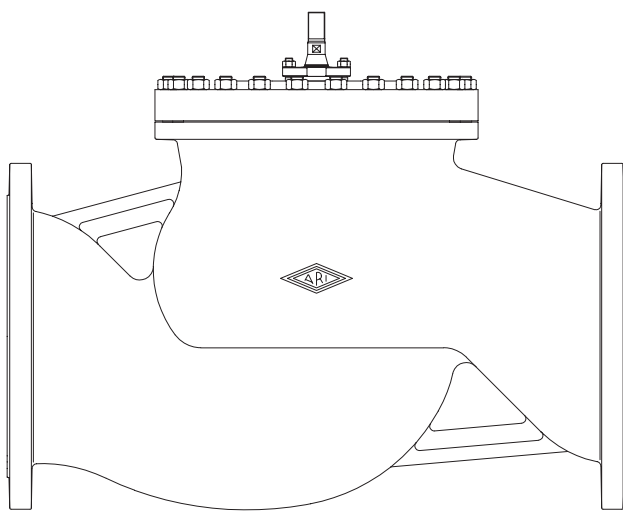


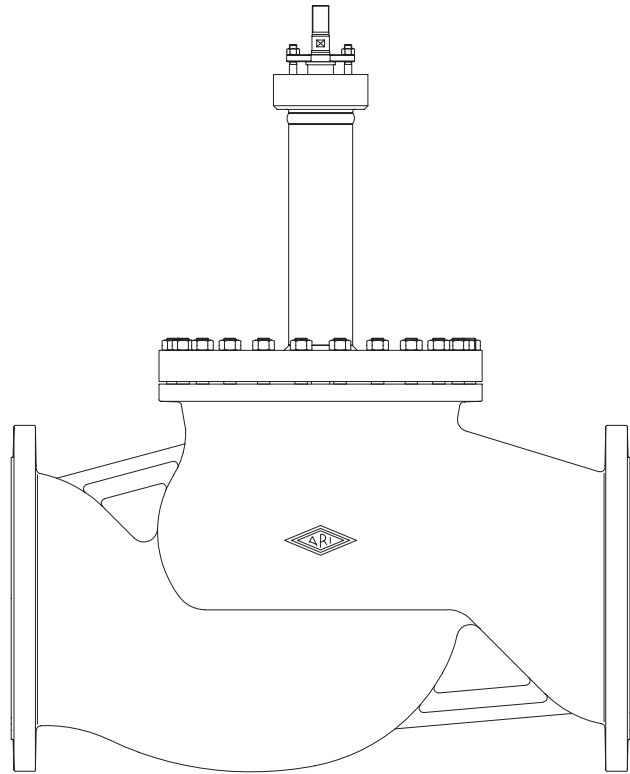
Operating and installation instructions

Straight through stop valves - STEVI® 405 / 460

DN 300 - 500



Series 405



Series 460

Contents

1.0 General information on operating instructions	2	7.0 Care and maintenance	9
2.0 Notes on possible dangers	2	7.1 Replacement of stem sealings	9
2.1 Significance of symbols	2	7.1.1 EPDM-ring stem sealing design	9
2.2 Explanatory notes on safety information	2	7.1.2 Stuffing box packings design	10
3.0 Storage and transport	2	7.1.3 Bellows seal design	11
4.0 Description	3	7.2 Replacement of internal parts	12
4.1 Scope of applications	3	7.2.1 Replacement of plug and stem	12
4.2 Operating principles	3	7.2.2 Replacement of the seat ring	12
4.3 Diagram	4	7.3 Tightening torques	13
4.4 Technical data	6	7.3.1 Tightening torques for nuts	13
4.5 Marking	6	7.3.2 Tightening torques for seatrings	13
5.0 Installation	7	8.0 Troubleshooting	13
5.1 General notes on installation	7	9.0 Troubleshooting table	14
5.2 Requirements at the place of installation	8	10.0 Dismantling the valve or the top part	15
5.3 Installation Instructions concerning actuators	8	11.0 Warranty / Guarantee	15
6.0 Putting the valve into operation	9	12.0 EC declaration of conformity /	16
		Manufacturers declaration	16

1.0 General information on operating instructions

These operating instructions provide information on mounting and maintaining the fittings. Please contact the supplier or the manufacturer in case of problems which cannot be solved by reference to the operating instructions.

They are binding on the transport, storage, installation, start-up, operation, maintenance and repair.

The notes and warnings must be observed and adhered to.

- Handling and all work must be carried out by expert personnel or all activities must be supervised and checked.

It is the owner's responsibility to define areas of responsibility and competence and to monitor the personnel.

- In addition, current regional safety requirements must be applied and observed when taking the fittings out of service as well as when maintaining and repairing them.

The manufacturer reserves the right to introduce technical modifications at any time.

These Operating Instructions comply with the requirements of EU Directives.

2.0 Notes on possible dangers

2.1 Significance of symbols



Warning of general danger.


2.2 Explanatory notes on safety information

In these Operating and Installation Instructions dangers, risks and items of safety information are highlighted to attract special attention.

Information marked with the above symbol and "**ATTENTION !**" describe practices, a failure to comply with which can result in serious injury or danger of death for users or third parties or in material damage to the system or the environment. It is vital to comply with these practices and to monitor compliance.

All other information not specifically emphasised such as transport, installation, operating and maintenance instructions as well as technical data (in the operating instructions, product documentation and on the device itself) must also be complied with to the fullest extent in order to avoid faults which in turn can cause serious injury to persons or damage to property.

3.0 Storage and transport

	<p>ATTENTION !</p> <ul style="list-style-type: none">- <i>Protect against external force (like impact, vibration, etc.).</i>- <i>Valve mountings such as actuators, handwheels, hoods must not be used to take external forces, e.g. they are not designed for use as climbing aids, or as connecting points for lifting gear.</i>- <i>Suitable materials handling and lifting equipment should be used.</i> <p><i>See catalog sheet for weights.</i></p>
---	--

- At -20°C to +65°C.

- The paint is a base coat to protect against corrosion during transportation and storage. Do not damage paint protection.

4.0 Description

4.1 Scope of applications

Valves are used for „interrupting the flow of liquids, gases and vapours in chemical, processing, and other plants“.



ATTENTION !

- Refer to the data sheet for applications, limits on use and possibilities.
- Certain media require or preclude the use of special materials.
- The valves are designed for standard operating conditions. If conditions exceed these requirements, e.g. aggressive or abrasive media, the operator should state the higher requirements when ordering.
- Valves made from grey cast iron are not authorised for use in systems subject to TRD 110.

The information complies to the Pressure Equipment Directive 97/23/EC.

It is the responsibility of the machine planner to ensure compliance.

The special markings on the valve must be taken into account.

Refer to the catalogue sheet to see which materials are used in standard versions.

Please contact the supplier or the manufacturer if you have any questions.

4.2 Operating principles

ARI stop valves are particularly suitable for operation by pneumatic or electrical actuators.

The flow direction in these stop valves must be always opposite to the closing direction.

4.3 Diagram

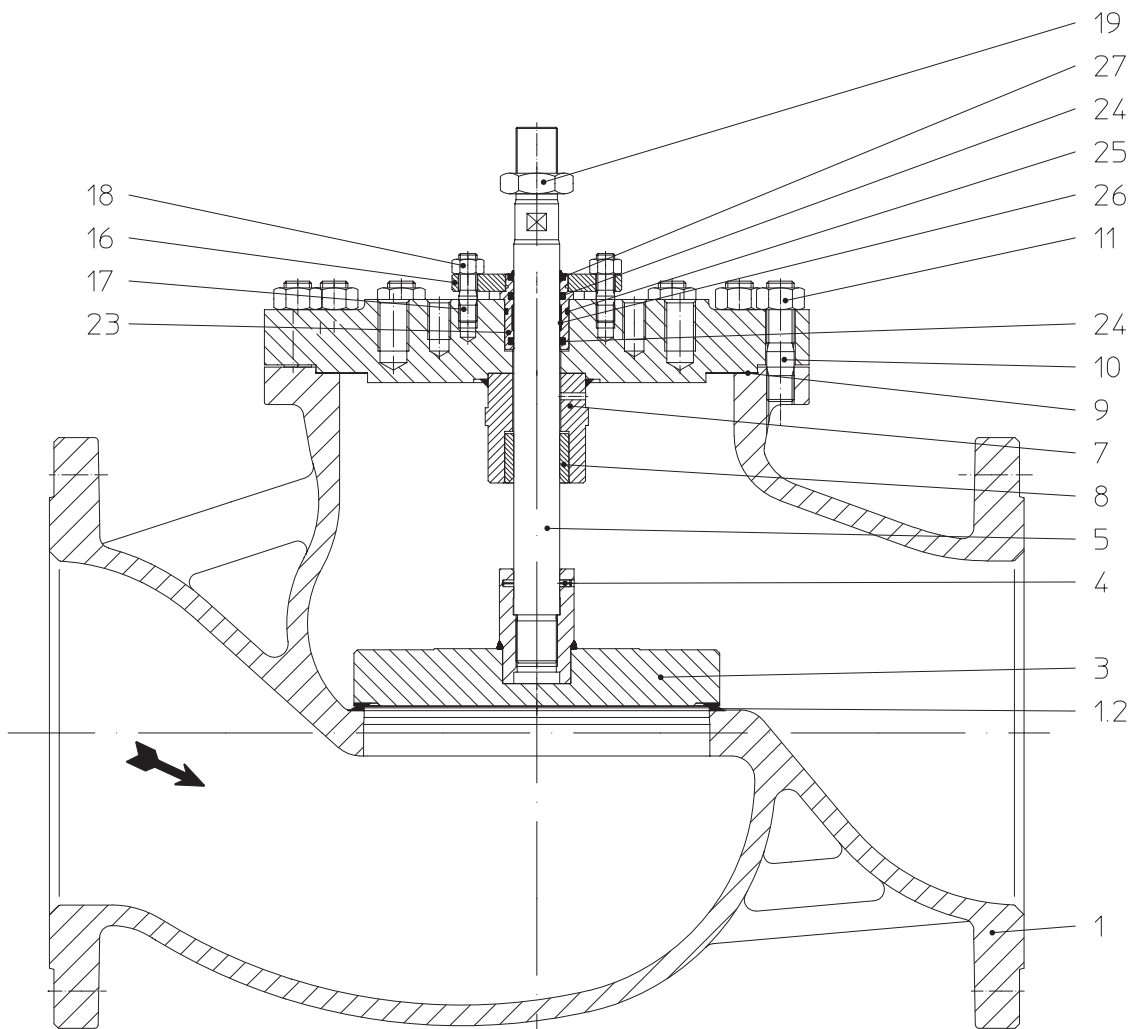


Fig. 1: Series 405

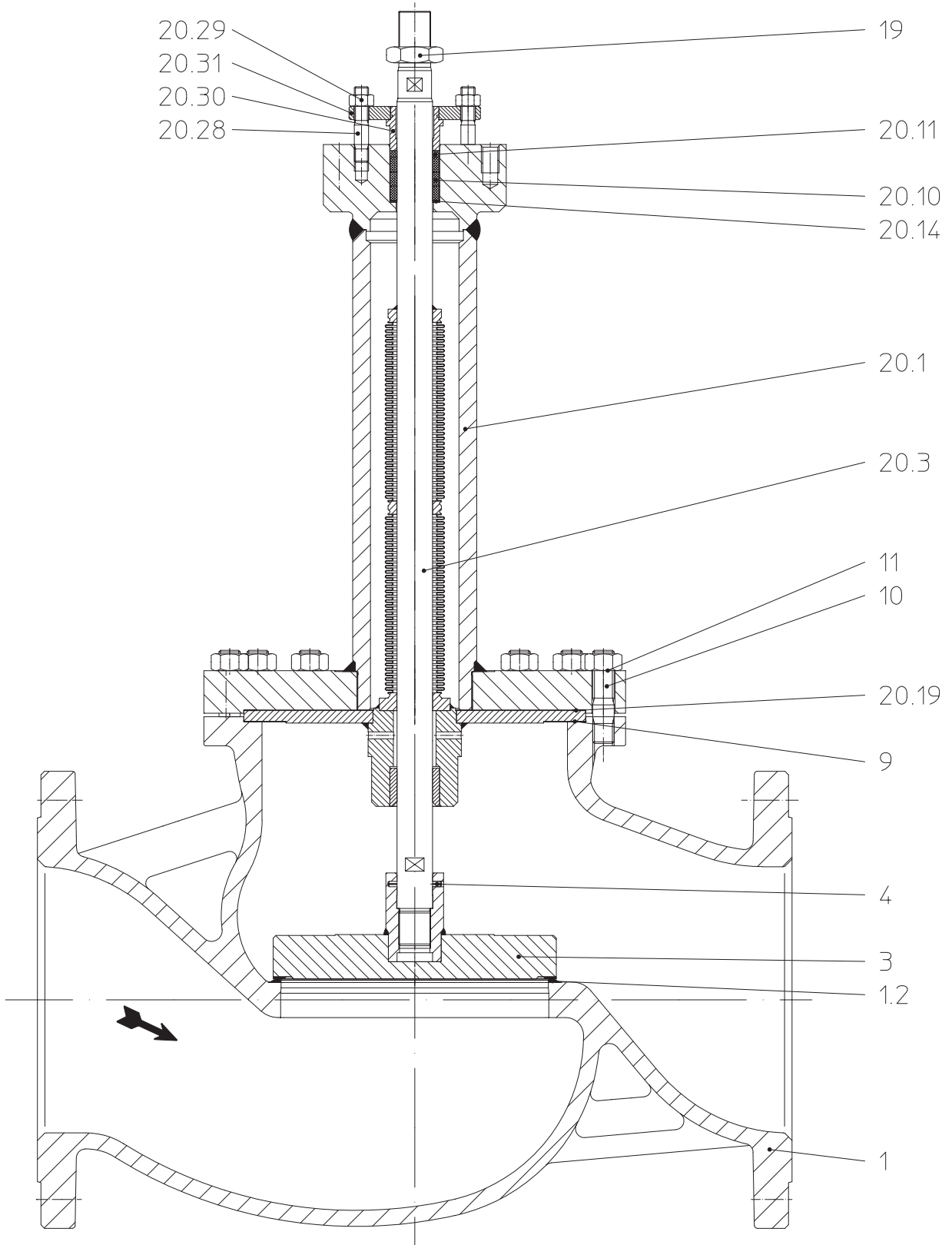


Fig. 2: Series 460

4.4 Technical data

for

- **Principal dimensions**

- **Pressure-temperature-ratings, etc.** refer to data sheet.

4.5 Marking

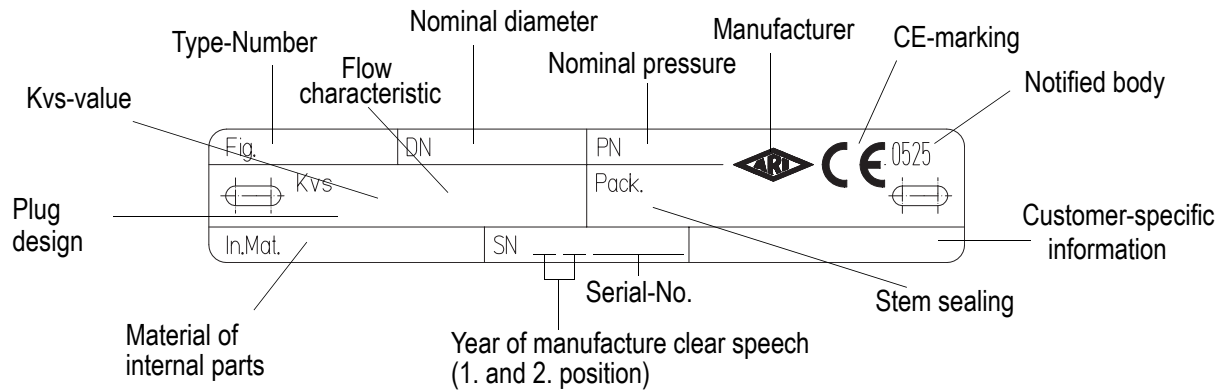


Fig. 3

Address of manufacturer: refer to item 11.0 Warranty / Guarantee

5.0 Installation

5.1 General notes on installation

The following items should be taken into account besides the general principles governing installation work:



ATTENTION !

- Remove flange covers if present.
- The interior of valve and pipeline must be free from foreign particles.
- Note installation position with reference to flow, see mark on valve.
- Steam line systems should be designed to prevent water accumulation.
- Lay pipelines so that damaging transverse, bending and torsional forces are avoided.
- Protect valves from dirt during construction work.
- Connection flanges must mate exactly.
- Valve mountings such as actuators, handwheels, hoods must not be used to take external forces, e.g. they are not designed for use as climbing aids, or as connecting points for lifting gear.
- Suitable materials handling and lifting equipment should be used.
Refer to data sheet for weights.
- Keep the thread and shaft of the stem free from paint.
- Centre gaskets between the flanges.
- Strainers or filters should be installed before the valves.

Planners / construction companies or operators are responsible for positioning and installing products.

5.2 Requirements at the place of installation

The place of installation should be easily accessible and provide ample space for maintenance and removing the actuator. The valve should preferably installed vertically with the actuator at the top. Inclined or horizontal installation without supports is permissible only with light actuators.

For this installation position, the two distance columns (or joke) have to be above each other in the vertical plane.

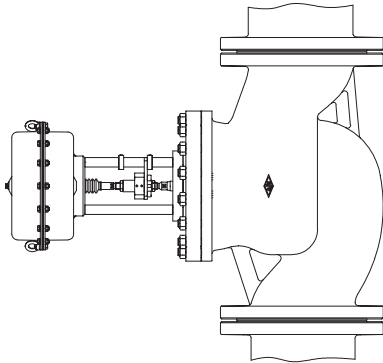


Fig. 4: Pipeline vertically

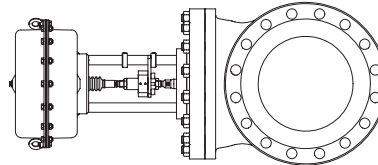


Fig. 5: Pipeline horizontally

Permissible actuator weights for valves with unsupported horizontal stems:

65 kg for DN 300-500

The pipes must be lagged to protect the actuators from excessive heat. Sufficient space must be left for the maintenance of the stem packing.

5.3 Installation Instructions concerning actuators

Normally, stop valves are supplied complete with actuator fitted.

It is not permitted to mantle / dismantle actuators with valves operating and service conditions (temperature and pressure). The actuators must be assemble as describe in the operating instructions during conversion and maintenance.

During assembly work, the plug is not be turned on its seating at closing pressure.



ATTENTION !

Care must be taken with the bellow type valves when actuators are mounted or removed. (Hold the valve-stem against turning with an open-end wrench!)

When retrofitting actuators, the maximum permissible force for valve actuation must be taken into account:

200kN for DN 300-500

6.0 Putting the valve into operation



ATTENTION !

- Before putting the valve into operation, check material, pressure, temperature and direction of flow.
- Regional safety instructions must be adhered to.
- Residues in piping and valves (dirt, weld beads, etc.) inevitably lead to leakage.
- Touching the valve when it is operating at high ($> 50\text{ °C}$) or low ($< 0\text{ °C}$) media temperatures can cause injury.

Affix warning notice or protective insulation as appropriate!

Before putting a new plant into operation or restarting a plant after repairs or modification, always make sure that:

- All works has been completed!
- The valve is in the correct position for its function.
- Safety devices have been attached.

7.0 Care and maintenance

Maintenance and maintenance intervals have to be defined by the operator according to the service conditions.

7.1 Replacement of stem sealings

7.1.1 EPDM-ring stem sealing design

Stem sealing consisting of:

- 1 scraper (pos. 27)
- 2 gaskets (pos. 24)
- 1 O-ring (pos. 25)

This sealing can be used for water and steam up to 130 °C operating temperature. Because of the elastomer material the sealing rings are maintenance free.

If the stem starts leaking, the ring pack is worn out and must be replaced.

Replacement of EPDM-stem sealings:

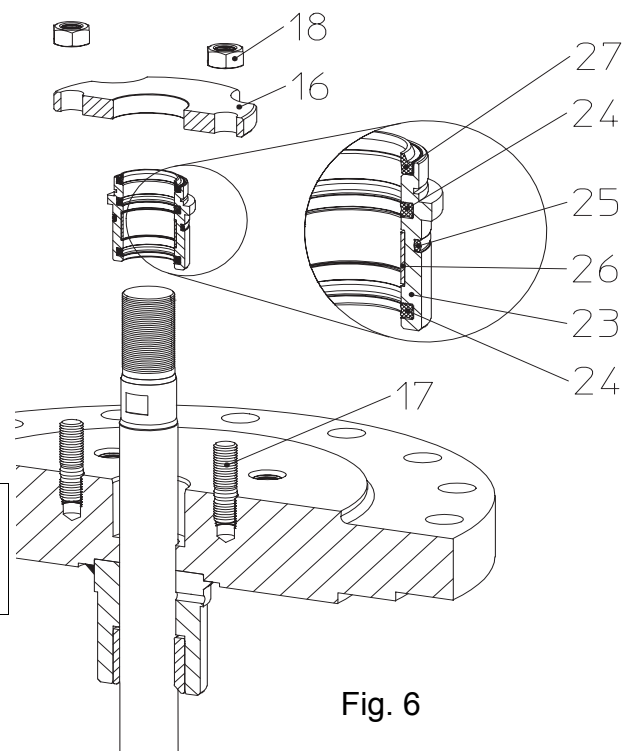


ATTENTION !

Refer to item 10.0 and 11.0 before dismantling the valve.

- Remove actuator.
(Refer to operating instructions for actuator!)
- When replacing the sealings (pos. 24, 25), make sure that the parts are installed in the correct order and positions (refer to Fig. 6).

Damaged stems must also be replaced (refer to item 7.2 for instructions) since a new sealing will soon start leaking again if the stem is damaged.



7.1.2 Stuffing box packings design

Stuffing box packings (pos. 12) require maintenance.

If leaks develop, immediately tighten the hexagon nuts (pos. 18) gradually until the packing (pos. 12) stops leaking.

The service life of stuffing box packings (pos. 12) can be increased by checking regularly leakage.

If leaks can no longer be stopped by tightening the nuts (pos. 18), a new packing ring (pos. 12) must be inserted into the gland.

Replacement of stuffing box packings:

 **ATTENTION !**
Refer to item 10.0 and 11.0 before dismantling the valve.

- Remove actuator. (Refer to operating instructions for actuator!)
- Insert the new packing ring as shown in Fig. 7 - Fig. 8

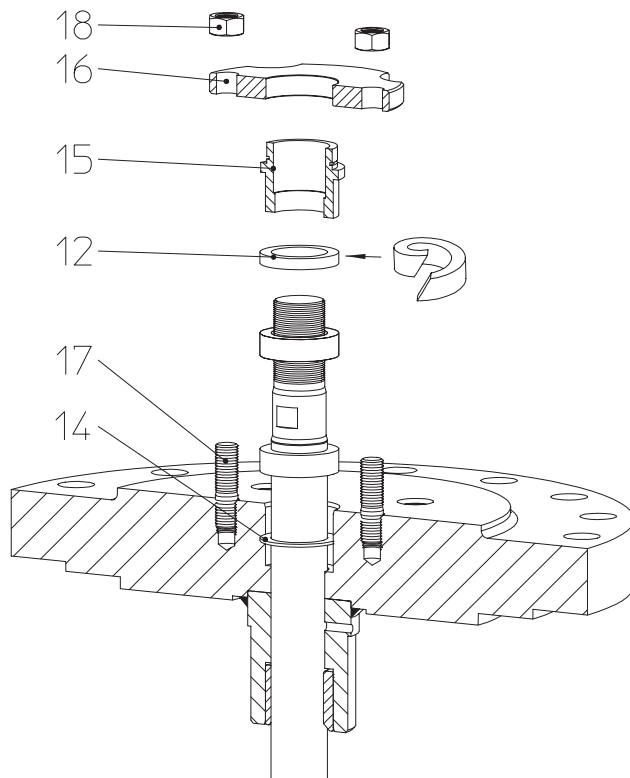


Fig. 7

Damaged stems must also be replaced (refer to item 7.2 for instructions) since a new sealing ring will soon start leaking again if the stem is damaged.

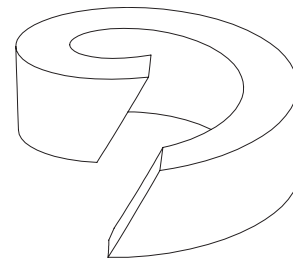


Fig. 8: split packing ring

If a split packing ring is used, cut with a chamfer as shown in Fig. 8.

7.1.3 Bellows seal design

If the stem leaks, the bellows seal (pos. 20.3) is defective. The leak can initially be stopped by tightening the stuffing box gland with nuts (pos. 20.29).

Stem and bellows (pos. 20.3) can only be replaced together.

Replacement of bellows seals:



ATTENTION !

Refer to item 10.0 and 11.0 before dismantling the valve.

- Remove actuator.
(Refer to operating instructions for actuator!)
- Loose nuts (pos. 11).
- Detach bellows assembly (pos. 20).
- Slacken nuts (pos. 20.29) by about 2-3 turns.
- Extract stem-bellows unit (pos. 20.3) from the bellows housing (pos. 20.1).
- Drive pin (pos. 4) out with a drift.
- Unscrew stem-/bellows unit (pos. 20.3) and plug (pos. 3).
- Bolt new parts together, drill and pin them.
- Replace 2 gaskets (pos. 20.19, 9).
- Assemble in reverse order.
- Secure with nuts (pos. 11) and tighten them crosswise.
(For tightening torques refer to item 7.3.1)
- Tighten nuts (pos. 20.29) gradually up to tightness of the stuffing box packing (pos. 20.10).

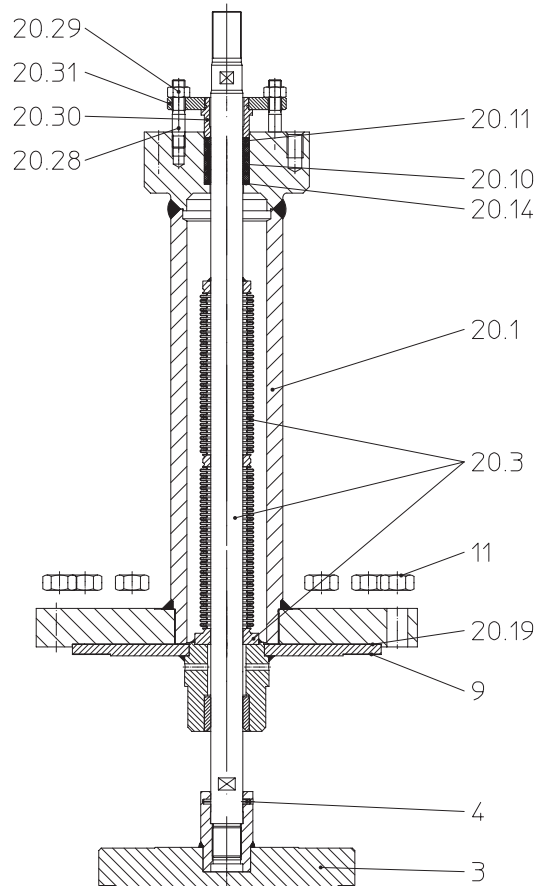


Fig. 9

7.2 Replacement of internal parts

7.2.1 Replacement of plug and stem



ATTENTION !

Refer to item 10.0 and 11.0 before dismantling the valve.

- Remove actuator. (Refer to operating instructions for actuator!)

Series 405:

- Loose nuts (pos. 11).
- Detach stuffing box housing (pos. 7).
- Slacken nuts (pos. 18) by about 2-3 turns.
- Extract plug (pos. 3) and stem (pos. 5).
- Drive pin (pos. 4) out with a drift.
- Unscrew stem (pos. 5) and plug (pos. 3).

Note:

In some designs the stem is locked by a spot weld, which has to be removed with a grinding machine.

- Bolt new parts together, drill and pin them.
- Replace gasket (pos. 9).
- Assemble in reverse order.
- Secure with nuts (pos. 11) and tighten them crosswise. (For tightening torques refer to item 7.3.1)

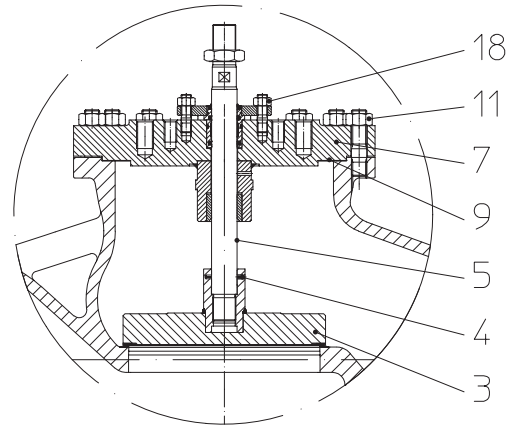


Fig. 10

Series 460:

For replacement of plug and stem with bellows sealing (series 462) refer to item 7.1.3.

7.2.2 Replacement of the seat ring

Only with bodies (pos. 1) of cast iron the seat ring is screwed in.



ATTENTION !

Refer to item 10.0 and 11.0 before dismantling the valve.

- Remove actuator. (Refer to operating instructions for actuator!)
- Loose nuts (pos. 11).
- Detach valve top part.
- Unscrew seat ring (pos. 2) with a special wrench (can be obtained from the manufacturer).
- Clean thread and sealing taper in body (pos. 1) and apply with suitable lubricant.
- Replace respectively recondition seat ring (pos. 2).
- Install seat ring (pos. 2). (For tightening torques refer to item 7.3.2.)
- Replace gasket (pos. 9).
- Assemble valve top part.
- Secure with nuts (pos. 11) and tighten them crosswise. (For tightening torques refer to item 7.3.1.)

7.3 Tightening torques

7.3.1 Tightening torques for nuts

M 24 = 340 - 410 Nm

M 27 = 340 - 410 Nm

7.3.2 Tightening torques for seatrings

DN 300 = 3850 Nm

! Refer to operating instructions for actuator concerned for installing actuators !

8.0 Troubleshooting

In the event of malfunction or faulty operating performance check that the installation and adjustment work has been carried out and completed in accordance with these Operating Instructions.




ATTENTION !

- It is essential that the safety regulations are observed when identifying faults.

If malfunctions cannot be eliminated with the help of the following table "9.0 Troubleshooting table", the supplier or manufacturer should be consulted.

9.0 Troubleshooting table



ATTENTION !
- read item 10.0 and 11.0 prior to dismantling and repair work!
- read item 6.0 before restarting the plant !

Fault	Possible cause	Corrective measures
No flow	Valve closed	Open valve (using actuator)
	Flange covers not removed	Remove flange covers
Little flow	Valve not sufficiently open	Open valve (using actuator)
	Dirt sieve clogged	Clean / replace sieve
	Piping system clogged	Check piping system
Valve stem moves in jerks.	Stuffing box sealing too tight (for valves with graphite packings)	Slacken stuffing box gland with nut (pos. 18 resp. pos. 20.29); Valve must not start leaking!
Valve stem leaking.	Defective stem sealing in valves with EPDM stem sealing	Replace stem sealing; refer to item 7.1.1
	In valves with packed stuffing boxes, tighten screw joint (pos. 29/pos. 20.17)	Tighten screw joint (pos. 29/ pos. 20.17); replace packing if necessary; refer to item 7.1.2
	Bellows defective in valves with bellows seal	Replace bellows unit (pos. 20.3); refer to item 7.1.3
Leakage too high when valve is closed.	Sealing surfaces of plug eroded or worn	Replace plug; refer to item 7.2.2.
	Sealing edge of seating damages or worn	Grind the seat
	Seating and/or plug dirty.	Clean internals of valve
	Pneumatic actuator not completely vented; spring force not fully effective	Vent actuator air chamber completely
	Actuator not powerful enough	Install more powerful actuator

10.0 Dismantling the valve or the top part



ATTENTION !

The following points must be observed:

- *Pressureless pipe system.*
- *Medium must be cool.*
- *Plant must be drained.*
- *Purge piping systems in case of caustic, inflammable, aggressive or toxic media.*

11.0 Warranty / Guarantee

The extent and period of warranty cover are specified in the "Standard Terms and Conditions of Albert Richter GmbH & Co. KG" valid at the time of delivery or, by way of departure, in the contract of sale itself.

We guarantee freedom of faults in compliance with state-of-the-art technology and the confirmed application.

No warranty claims can be made for any damage caused as the result of incorrect handling or disregard of operating and installation instructions, datasheets and relevant regulations.

This warranty also does not cover any damage which occurs during operation under conditions deviating from those laid down by specifications or other agreements.

Justified complaints will be eliminated by repair carried out by us or by a specialist appointed by us.

No claims will be accepted beyond the scope of this warranty. The right to replacement delivery is excluded.

The warranty shall not cover maintenance work, installation of external parts, design modifications or natural wear.

Any damage incurred during transport should not be reported to us but *rather* to the competent cargo-handling depot, the railway company or carrier company immediately or else claims for replacements from these companies will be invalidated.



Technology for the Future.

GERMAN QUALITY VALVES

ARI-Armaturen Albert Richter GmbH & Co. KG, D-33756 Schloß Holte-Stukenbrock

Telephone (+49 5207) 994-0 Telefax (+49 5207) 994-158 or 159

Internet: <http://www.ari-armaturen.com> E-mail: info.vertrieb@ari-armaturen.com

12.0 EC declaration of conformity / Manufacturers declaration

ARI-Armaturen Albert Richter GmbH & Co. KG,
Mergelheide 56-60, D- 33756 Schloß Holte-Stukenbrock

EC declaration of conformity

as defined by
the Pressure Equipment Directive 97/23/EC

Herewith we declare,

that according to the above mentioned Pressure Equipment Directive (PED) the below listed products comply and have been approved according to table 6, annex II, module H or module H1 (with safety function: also EC type test according to module B+D) through LLOYD'S REGISTER QUALITY ASSURANCE (NB-No. 0525), Mönckebergstr. 27, D-20095 Hamburg.

Module H, Certificate-No: 50003/1

Straight through stop and control valves

Type 405, 460, 440, 441, 445, 446, 470, 471, 422, 462, 425, 426, 480

Applied standard:

DIN EN 60534 part 1

VDI/VDE 3844 sheet 1

DIN 3840

AD 2000 leaflet A4

- Cast iron with spheroidal graphite
- Cast steel
- Forged steel

Module H1, Certificate-No: 50003/2

Straight through control valves with safety function

Type 440, 441

Applied standard:

DIN EN 60534 part 1

VDI/VDE 3844 sheet 1

DIN 3840

AD 2000 leaflet A4

- Cast iron with spheroidal graphite
- Cast steel
- Forged steel

Manufacturers declaration

as defined by
the Machinery Directive 98/37/EC

Herewith we declare,

If the supplied model is intended to be incorporated into machinery or assembled with other machinery to constitute machinery covered by this directive and must be put into service until the machinery into which it is be incorporated has been declared in conformity with the provisions of the EC-Machinery Directive as amended by 98/37/EC.

Schloß Holte-Stukenbrock, 26.11.2002


.....
(Brechmann, Managing director)